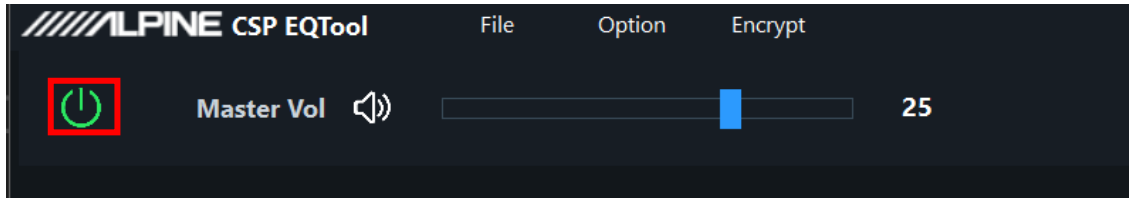


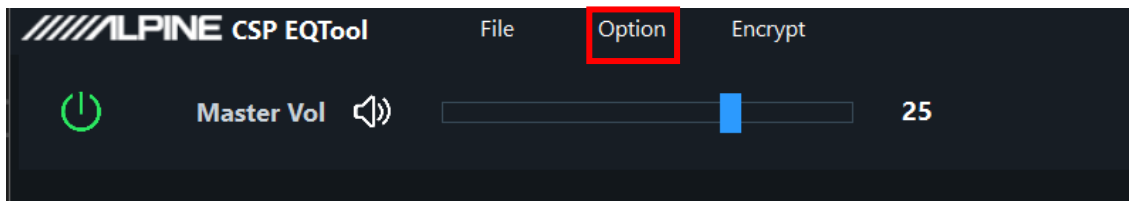
23M_CSP_AMP Update Manual

1. Update Operation

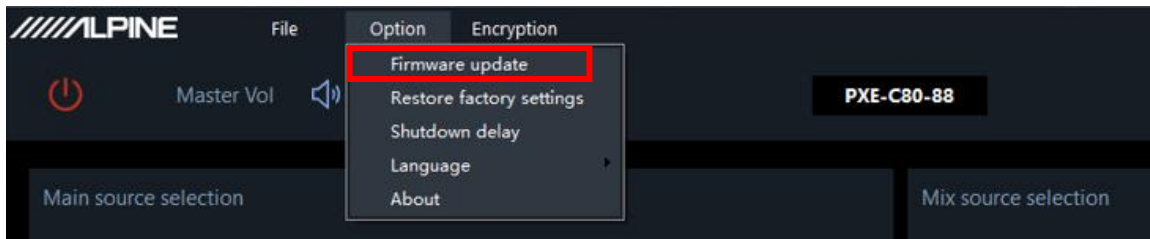
① Confirm whether the AMP is connected normally: the button in the red circle is green.



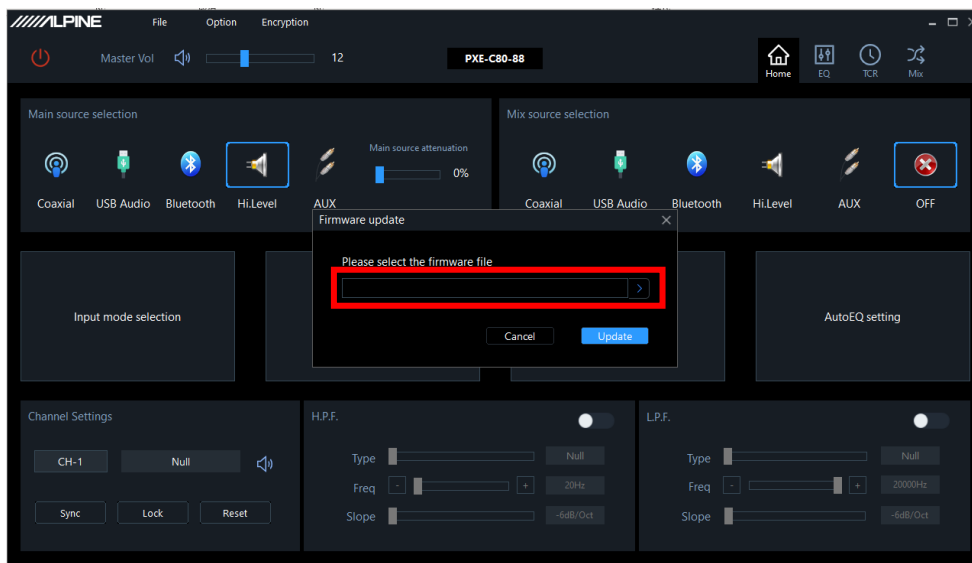
② Click "Option" button.



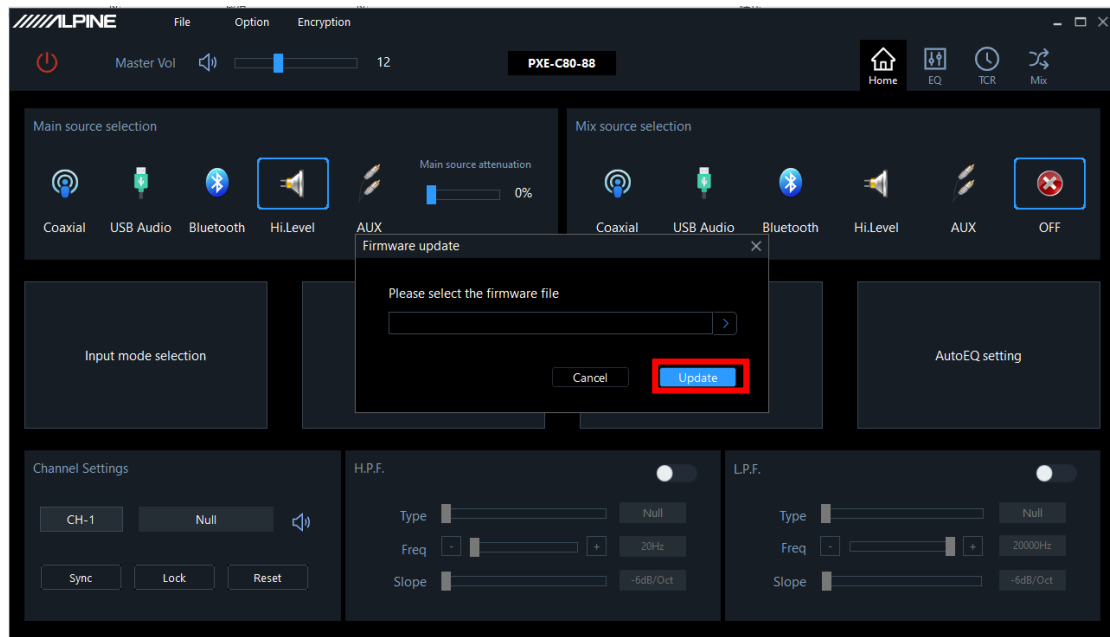
③ Click "Firmware update" button.



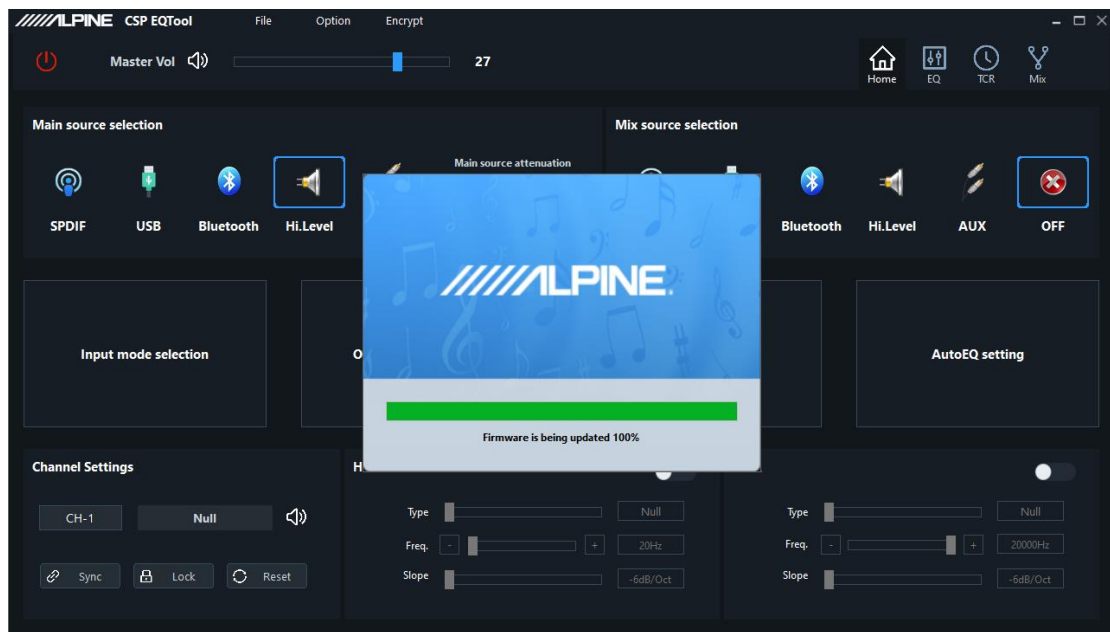
④ Import the update file in the pop-up dialog.



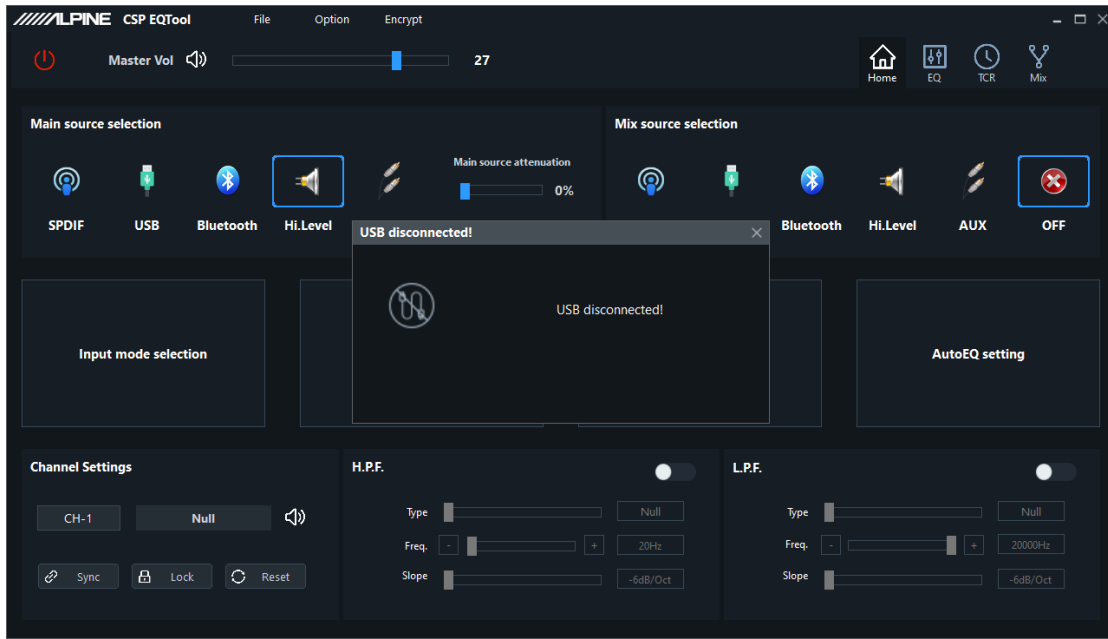
⑤ Click "Update" button.



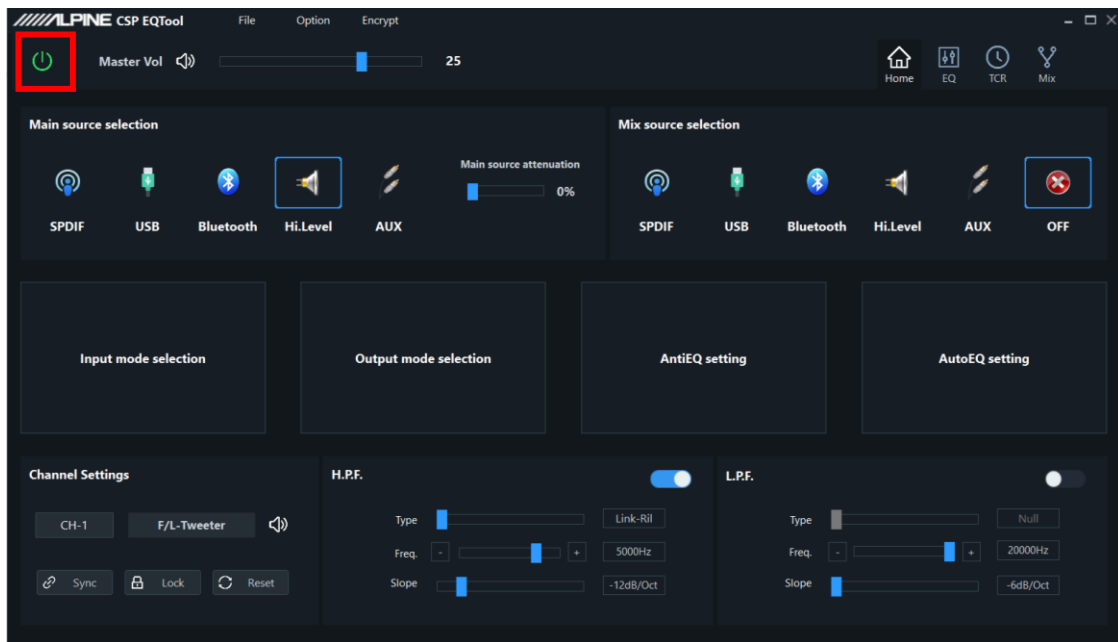
⑥ Update progress



⑦ AMP will restart after update successful, and the connection to the EQ Tool will be disconnected during the restart process.

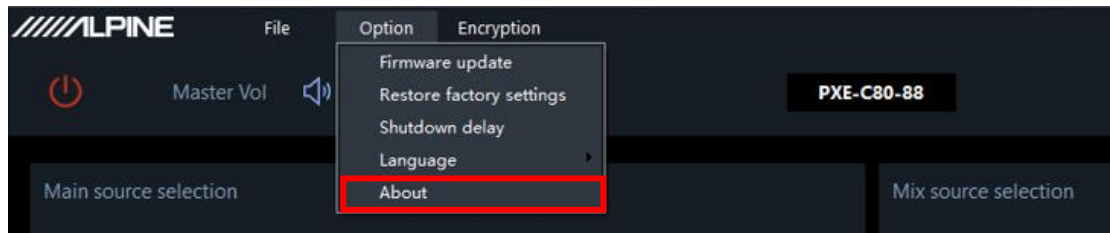


⑧ After restart , AMP will automatically re-connect.



II、 Update Check

① Click "About" in the Option menu.



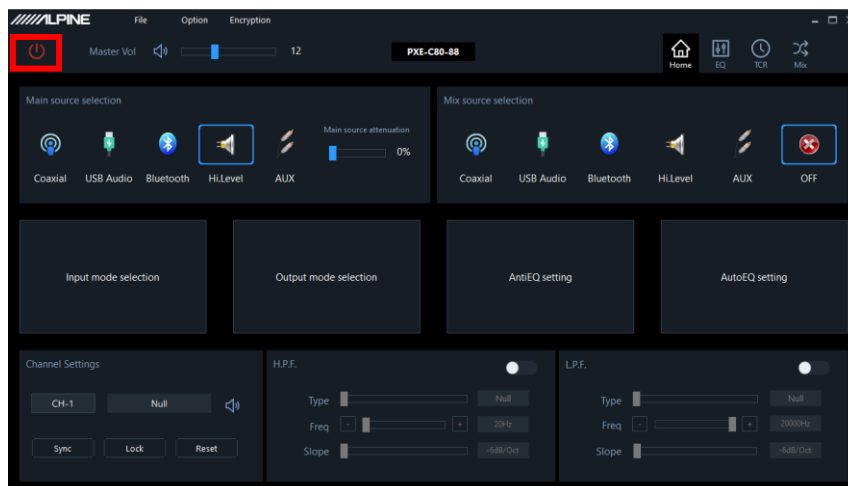
② Verify that the current software version is consistent with the upgraded version.



III、 Precautions

① Do not disconnect the USB connection during the upgrade process.

② If the switch does not automatically change to green after connecting the AMP, click this button to toggle the switch to green before the upgrade operation.

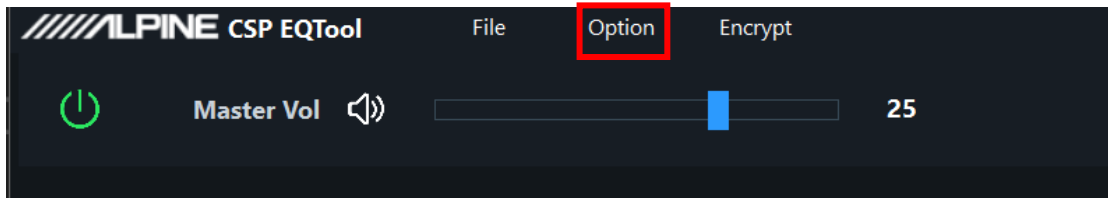


IV. Update failure return operation

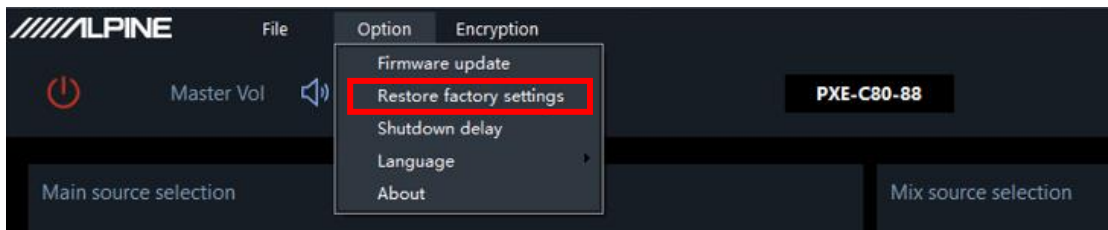
- ① Disconnect the AMP from the EQ tool
- ② Close the EQ Tool.
- ③ Restart the AMP.
- ④ Reconnect the AMP and the EQ tool.
- ⑤ Try update again.

V. Restore factory settings

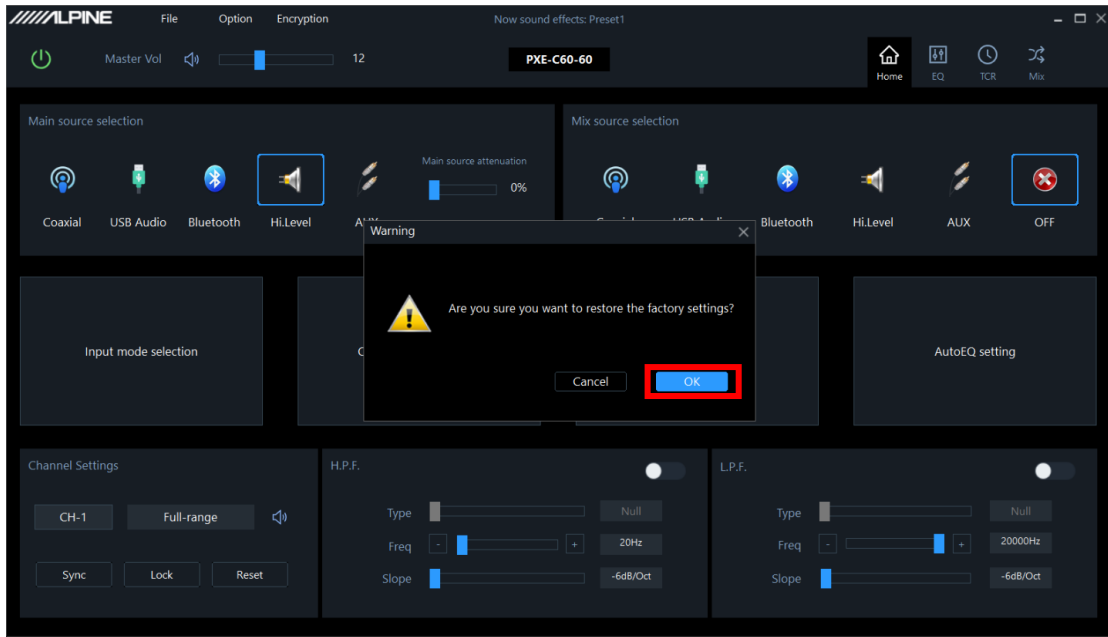
- ① Click "Option" button.



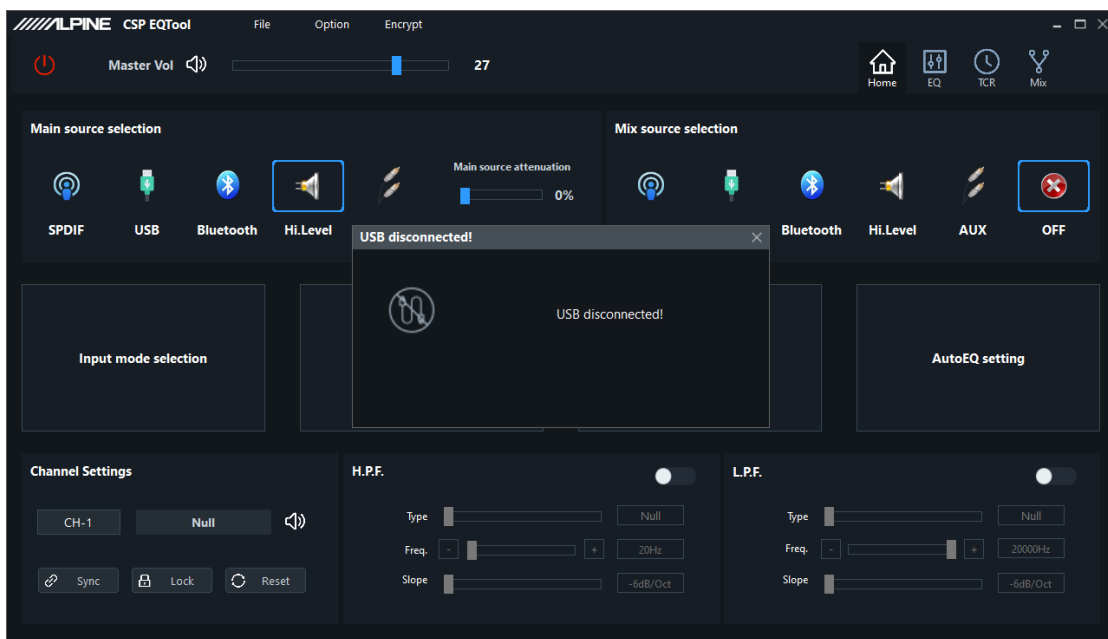
- ② Click "Restore factory settings" button.



- ③ Click "OK" button.



④ AMP will restart, and the connection to the EQ Tool will be disconnected during the restart process.



⑤ After restart, AMP will automatically re-connect.

ALPINE CSP EQTool File Option Encrypt

Master Vol 25

Home EQ TCR Mix

Main source selection

SPDIF USB Bluetooth **Hi.Level** AUX Main source attenuation 0%

Mix source selection

SPDIF USB Bluetooth Hi.Level AUX **OFF**

Input mode selection Output mode selection AntiEQ setting AutoEQ setting

Channel Settings **CH-1** F/L-Tweeter

Sync Lock Reset

H.P.F.

Type Link-Ril

Freq. 5000Hz

Slope -12dB/Oct

L.P.F.

Type Null

Freq. 20000Hz

Slope -6dB/Oct